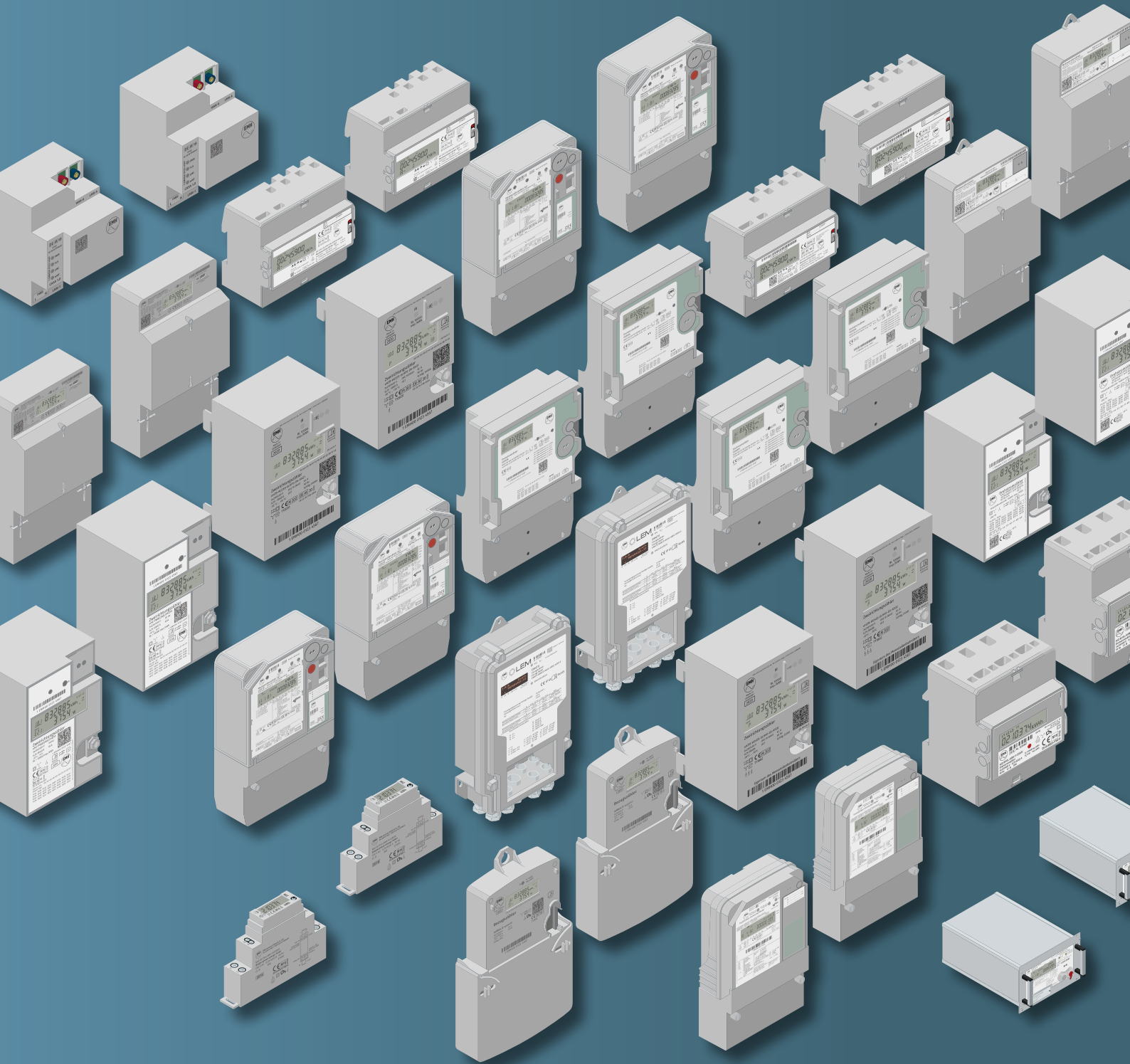
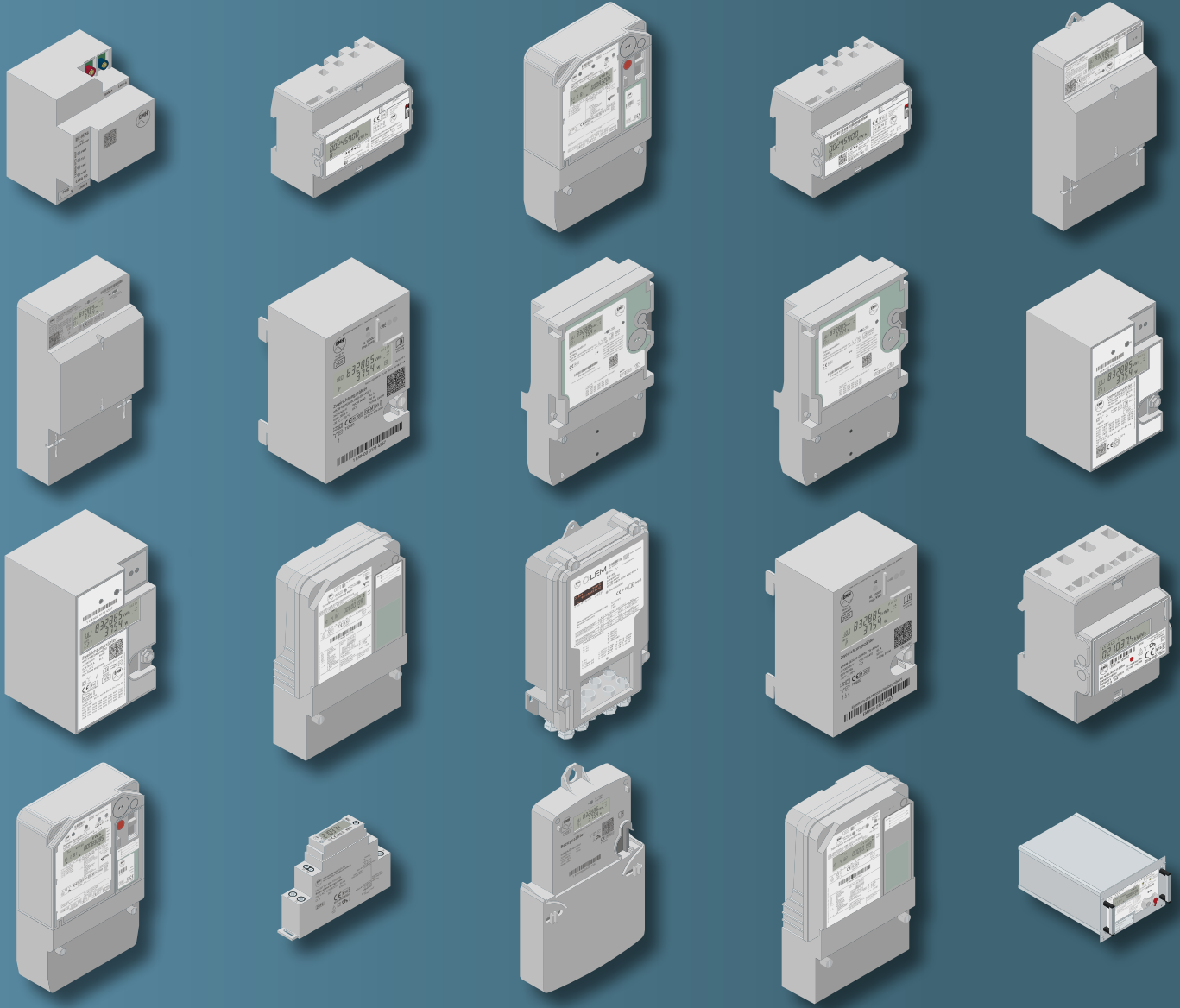


Product Catalogue





Contents

EMH metering – The company	4-7
Special meters	9-13
Domestic meters & smart meters	15-21
CASA – smart meter gateway	23-25
Industrial meters	27-31
E-mobility	33-35
Communication	37-41
Software	43-47
EHM supplier code	48-50
Get to know us	54-55
Contact	56
Imprint	59

since

1991

300

employees

more than

5,000

customers



operating in more than

50
countries

over

900,000

devices manufactured in 2022

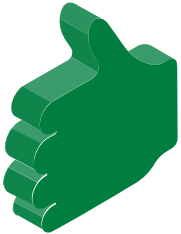
an installed base
of more than

8 million

devices worldwide

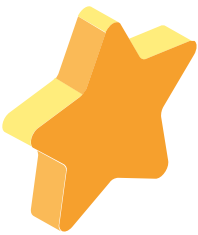
EMH metering

EMH metering is one of the world's leading technology companies for digital systems for the acquisition, transmission, storage and distribution of energy metering data. With intelligent and coordinated metering systems, EMH metering enables companies to digitize their energy systems and open up new business models. Many developments of this German "hidden champion" were and are milestones of digital metering technology and have decisively advanced the digitalization of the energy industry.



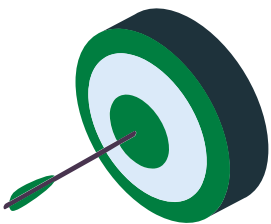
Top technology "Made in Germany"

EMH metering is one of the world's leading technology companies for innovative digital meter technology in the energy industry. With intelligent and coordinated metering systems, we lay the foundation for the digitalization of the energy industry and for forward-looking business models of utilities. With our meters and communication solutions "Made in Germany", we are ready for the future markets "Smart Metering", "Smart Grid", "e-Mobility" and "Smart Home".



Versatile: portfolio for all applications

EMH metering GmbH & Co KG is the only German company to offer the entire range of meters and communication devices required by the energy industry – from basic meters to e-mobility solutions. Our portfolio comprises more than 10,000 individual device variants. EMH metering has the right solution for almost every application in energy metering and metering data transmission.



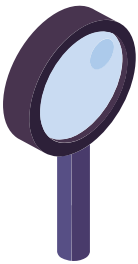
Future orientation: rollout solutions

We are a one-stop shop for the entire portfolio of devices required for the German smart meter rollout: from basic meters to smart meter gateways. Our smart meter gateway CASA is certified by the German Federal Office for Information Security (BSI) according to Common Criteria. This means that CASA is approved for the legal rollout of the Intelligent Metering System (iMsys). With mMe 4.0, we have developed a particularly efficient meter for the rollout of modern metering equipment. We manufacture the devices for the rollout entirely in Germany. This ensures high quality, short delivery times and process flexibility.



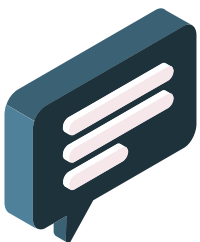
Technology leadership: commercial and industrial meters

Our commercial and industrial meters, which include high-precision billing meters for industrial and commercial applications, are among the world's leading products. Every second meter used for load profile metering in Germany today is made by EMH in Germany – and is also manufactured here. In our Industrial Meters business unit, we offer special DIN-rail meters that enable meter readings to be made in accordance with the German Calibration Act and to differentiate between third-party quantities



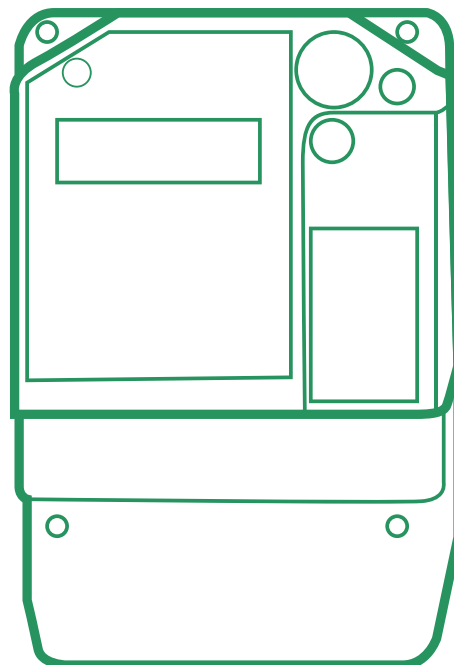
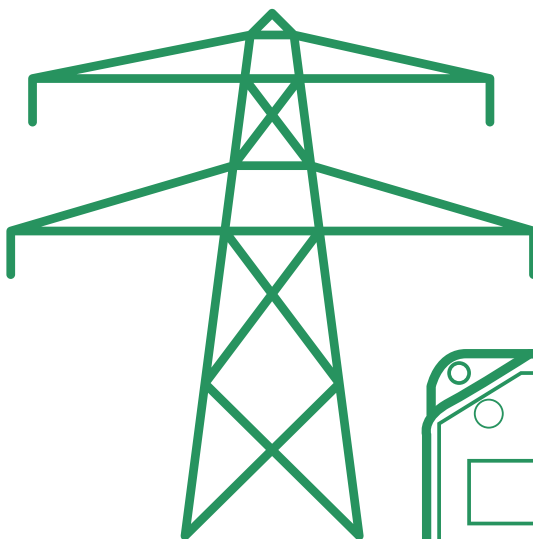
Research and development: driving innovation

At our R&D centre in Brackel, near Hamburg, Germany, highly qualified engineers work on advanced metering and communication technologies. Our technical innovations are based on more than 30 years of experience in the development of digital metering technology, the use of the latest software applications and cooperation with our customers in the field. In this way, we are always able to unlock new potential in digital metering technology.



Customer focus: milestones in meter technology

With our 300 employees, we manufacture a wide range of innovative measurement solutions at our site in Gallin. Our drive is always to meet our customers' needs in the best possible way. This was the goal of EMH's founding father, Peter Scheew, when he developed the very first electronic meter in 1989. In doing so, he laid the foundations for decisive developments in the energy industry. The first meter with integrated load profile memory from EMH metering was another milestone. This led to the development of registered load profile metering (RLM) - a standard for offering individual electricity prices to large consumers and providing them with an optimal supply.



Commerical and industrial meters

Our commercial and industrial meters include high accuracy meters for use in transmission networks and meters for registered load profile measurement. These sophisticated developments have put EMH metering at the forefront of meter manufacturers worldwide. Our meters not only measure highly accurately, they also provide detailed information about the condition of your network. This is a prerequisite for secure grid operation and the development of a smart grid. Our meters also help you to keep your grid stable: you can accurately forecast consumption based on detailed metering data. This data also forms the basis for new business models for billing large consumers.



LZQJ-SGM

4-quadrant/combined meter

The LZQJ-SGM is our new future-proof high accuracy meter series. It can be used at all grid levels and has been developed for specific Smart Grid applications and according to the latest safety standards. With the high accuracy meter, you can measure the total amount of energy consumed at different tariff times and determine grid status data with the highest precision.

Summary:

- Plug-in communication module (LTE, GPRS, Ethernet)
- Full DLMS/COSEM support
- Accuracy cl. 0.1S, 0.2S, 0.5S and cl. 1
- High-level security
- Local and remote firmware updates
- Protection up to IP54
- Power quality monitoring acc. to IEC 61000-4-30 class A
- Simultaneous communication on several channels (up to 5 independent, parallel interfaces)
- Firmware separation provides future-proof flexibility

Can be combined with the following products:

- VARIOMOD-XC (LTE, GPRS, Ethernet)
- Interface module IMXCRS
- Meter security module ZSM-XC
- Communication and parametrisation software: COMBI-MASTER 2.0

LZQJ-XC

4-quadrant/combined meter

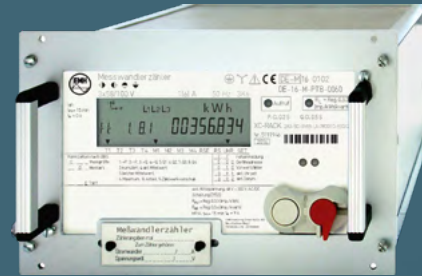
The meters of the LZQJ-XC series are designed for universal applications according to VDEW specification 2.1. Thanks to a proven metering method, the meters are characterised by high reliability. The powerful processor system ensures a solid basis for future expansions.

Summary:

- Plug-in communication module (LTE, GPRS, Ethernet)
- Connection to SMGW via ZSM module
- Swappable readout battery
- Grid analysis according to DIN EN 50160
- DLMS-compatible
- Multiple voltage, power and frequency versions, including 3*400/690V

Can be combined with the following products:

- VARIOMOD-XC module range (GPRS/LTE, Ethernet)
- Interface module IMXCRS
- Meter security module ZSM-XC
- DCF antenna (DCF77-TH2)
- Communication and parametrisation software: COMBI-MASTER 2000



DMTZ-XC

Digital multi-tariff meter

The DMTZ-XC multi-tariff meter, as the “little brother” of LZQJ-XC, is designed for metering active energy. Optionally, it can be designed as a dual energy direction meter. Specially designed for use in industry and at home, it is characterised by flexible tariff control capability.

Summary:

- Plug-in communication module (LTE, GPRS, Ethernet)
- Connection to SMGW via ZSM module
- Tariff control via integrated tariff timer and/or ripple control receiver
- Maximum metering coverage
- Recording of the load profile
- No reactive energy detection

Can be combined with the following products:

- VARIOMOD-XC (GPRS/LTE, Ethernet)
- Interface module IMXCRS
- Meter security module ZSM-XC
- DCF antenna (DCF77-TH2)
- Communication and parametrisation software: COMBI-MASTER 2000

XC RACK

Precision plug-in meter for 19" racks

The precision meter XC-Rack is designed for registering large quantities of energy e.g. measuring at points of supply. The meter has a high precision measuring system which is based on the XC-technology. Beyond this, the XC-Rack can be connected to communication modules with which you can reach a quicker data transfer.

Summary:

- Metering precision in cl. 0.2S and cl. 0.5S
- Improved power quality data
- Communication via DLMS protocol
- Onboard ethernet interface

Can be combined with the following products:

- DCF antenna (DCF77-TH2)
- Communication and parametrisation software: COMBI-MASTER 2000
- 19" plug-in frame



EM4TII+

Energy meter for railway applications

The EM4TII+ energy meter is designed for flexible use in railway applications, tram solutions as well as battery-supported railcar systems. It detects the consumption and regeneration of energy as well as system voltage changes according to EN 50463-x in AC, DC and mixed applications, and can be flexibly connected to current and voltage transformer systems.

Summary:

- EM4TII+ complies with the requirements of TSI Regulation (EU) 1302/2014 including the amendments to this regulation, among them the additions from (EU) 218/868
- Accuracy class 0.5R according to EN 50463-2 for consumption and regeneration of active and reactive energy
- According to the requirements of the European Union (EU) TSI Directive
- GPS receiver connectivity to store location and time information
- Optionally with TEMA4Tplus mounting box
- Approved and in use with DB grid DCS, compatibility test for ERESS DCS in preparation

Can be combined with the following products:

- TEMA4Tplus or TEMA4G box optional
- Communication and parametrisation software: Combi-Master



Special meters

Domestic meters

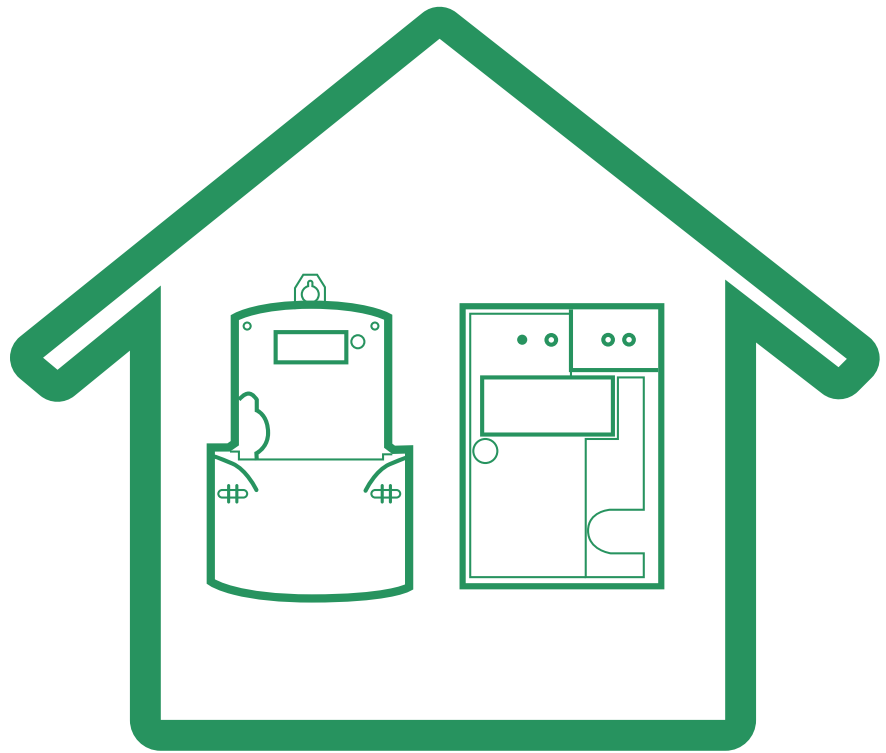
Smart meter gateway

Industrial meters

e-mobility

Communication

Software



Domestic meters & smart meters

Digital household meters from EMH metering are state-of-the-art technology. Meter operators are therefore guaranteed the successful rollout of the state-of-the-art measuring equipment (mME) and of the intelligent metering system (iMSys) – just as required by the “Digitisation of the Transition to Renewable Energy Act” (GDEW). EMH metering also uses measurement technologies with assured reliability and precision. Last but not least, the high quality of our meters ensure a long lifetime of our products.

Modern metering equipment according to the German Meter Operation Act



eHZM

Electronic domestic meter

eHZM is an efficient meter solution for rollouts. To optimise the rollout economically, we rely on interoperable standards, automated ordering and production processes, high quality specifications and new methods in hardware design. eHZM fulfills all legal requirements for rollouts.

Summary:

- MID approval
- Usable as a modern metering device incl. display of past 24 months of values according to the German Meter Operation Act
- For installation on plug-in metering stations
- Interoperable
- Industry 4.0-compatible, sustainable manufacturing
- Quality by design
- Efficient installation process, reduced volume, less disposable packaging and more devices with the same shipping volume, e.g. number of devices/grid box
- Gateway connection via OKK-BKE and ZSM-ED
- Elevated resistance to external magnetic fields
- Power supply unit with low electromagnetic radiation
- PIN protection

Can be combined with the following products:

- Terminal cover MKKD-eHZ for additional devices
- Adapter plate BKE-A, BKE-I or BKE-AZ3
- Optical communication adapter OKK-BKE-F
- VMET-E tariff control module



Also with
wM-Bus



mMe4.0

Electronic household meter

mMe4.0 is a particularly efficient meter solution for rollouts. To optimise the rollout economically, we rely on interoperable standards, automated ordering and production processes, high quality specifications and new methods in hardware design. mMe4.0 complies with all legal requirements for rollouts.

Summary:

- MID approval
- Usable as a modern metering device incl. display of past 24 months of values according to the German Meter Operation Act
- Legally compliant modern metering device
- Accuracy class Cl. A according to EN 50470-1, -3
- Interoperable » Industry 4.0-compatible, sustainable manufacturing
- Quality by design
- Efficient installation process
- Gateway connection via OKK-BKE and ZSM-ED
- Elevated resistance to external magnetic fields
- Power supply unit with low electromagnetic radiation
- PIN protection

ED300L

Electronic household meter

The G generation ED300L corresponds to the latest three-phase meter type as defined by the German Meter Operation Act for domestic energy metering. It fulfils the requirements of the EDL specifications with additional display of the past 24 months of values.

Summary:

- MID approval
- Usable as a modern metering device incl. display of past 24 months of values according to the German Meter Operation Act
- For installation on three-point metering stations
- MSB interface (RS232) with SML protocol
- Elevated resistance to external magnetic fields
- Power supply unit with low electromagnetic radiation
- PIN protection

Can be combined with the following products:

- Terminal cover MKKD-ED300L for additional devices
- Communication and parametrisation software: Combi-Master

Basic meter



Also available as transformer connected version



for 60 A connections

eHZ-P

Electronic basic meter in plug-in technology

The P generation eHZ is our basic domestic meter for plug-in metering stations. It meets the requirements of the German Meter Operation Act for connection to a smart meter gateway and is easy to install and swap due to its plug-in technology.

Summary:

- MID approval and national approval
- Usable as a modern metering device incl. display of past 24 months of values according to the German Meter Operation Act
- For installation on plug-in metering stations
- Available as consumption and/or delivery meter
- Secure TLS communication
- Elevated resistance to external magnetic fields
- Power supply unit with low electromagnetic radiation
- Optional: wM bus interface, unidirectional
- Grid option
- PIN protection

Can be combined with the following products:

- Terminal cover MKKD-eHZ for additional devices
- Adapter plate BKE-A or BKE-AZ3
- Opt. communication adapter OKK-BKE-F/OKK-BKE-N
- VMMT-N tariff control module
- Smart meter gateway (e.g. CASA)
- Communication and parametrisation software: Basic meter tool

eBZD-H

Electronic basic meter

The H generation eBZD is our basic meter for three-point installation. It meets the requirements of the German Meter Operation Act for connection to a smart meter gateway including display of the past 24 months of values.

Summary:

- MID approval and national approval
- Usable as a modern metering device incl. display of past 24 months of values according to the German Meter Operation Act
- For installation on three-point metering stations
- Suitable for connection to a smart meter gateway for operation in the smart metering system
- DIN rail installation for additional devices
- Secure TLS communication
- Elevated resistance to external magnetic fields
- Power supply unit with low electromagnetic radiation
- Grid option
- PIN protection

Can be combined with the following products:

- Communication and parametrisation software: Basic meter tool
- Smart meter gateway (e.g. CASA)



Also available as transformer connected version

eBZD-F

Electronic measuring transformer – basic meter

The F generation eBZD is a basic meter with measuring transformer function for metering larger quantities of electricity in the smart metering system. It also meets the requirements of the German Meter Operation Act for connection to a smart meter gateway and includes the display of the past 24 months of values.

Summary:

- MID approval and national approval
- Usable as a modern metering device incl. display of past 24 months of values according to the German Meter Operation Act
- For installation on three-point metering stations
- Suitable for connection to a smart meter gateway for operation in the smart metering system
- DIN rail installation for additional devices
- Secure TLS communication
- Elevated resistance to external magnetic fields
- Power supply unit with low electromagnetic radiation
- Grid option
- PIN protection

Can be combined with the following products:

- Communication and parametrisation software: Basic meter tool
- Smart meter gateway (e.g. CASA)



Special meters

Domestic meters

Smart meter gateway

Industrial meters

e-mobility

Communication

Software



eHZB

Electronic basic meter in plug-in technology

eHZB is our latest basic domestic meter for plug-in metering stations. It meets the requirements of the German Meter Operation Act for connection to a smart meter gateway and is easy to install and swap thanks to its plug-in technology. Its interoperability, an even more efficient installation process and Industry 4.0-compatible as well as sustainable manufacturing complete this product.

Summary:

- MID approval and national approval
- Usable as a modern metering device incl. display of past 24 months of values according to the German Meter Operation Act
- For installation on plug-in stations
- Reduced housing depth for narrow installation conditions
- Service display for the installation process
- Grid option
- Available as consumption and/or delivery meter
- Secure TLS communication
- Elevated resistance to external magnetic fields
- Power supply unit with low electromagnetic radiation

Can be combined with the following products:

- Terminal cover MKKD-eHZ for additional devices
- Adapter plate BKE-A or BKE-AZ3
- Opt. communication adapter OKK-BKE-F/OKK-BKE-N
- VMNT-N tariff control module
- Smart meter gateway (e.g. CASA)
- Communication and parametrisation software:
 - Basic meter tool
- PIN protection





Software

Communication

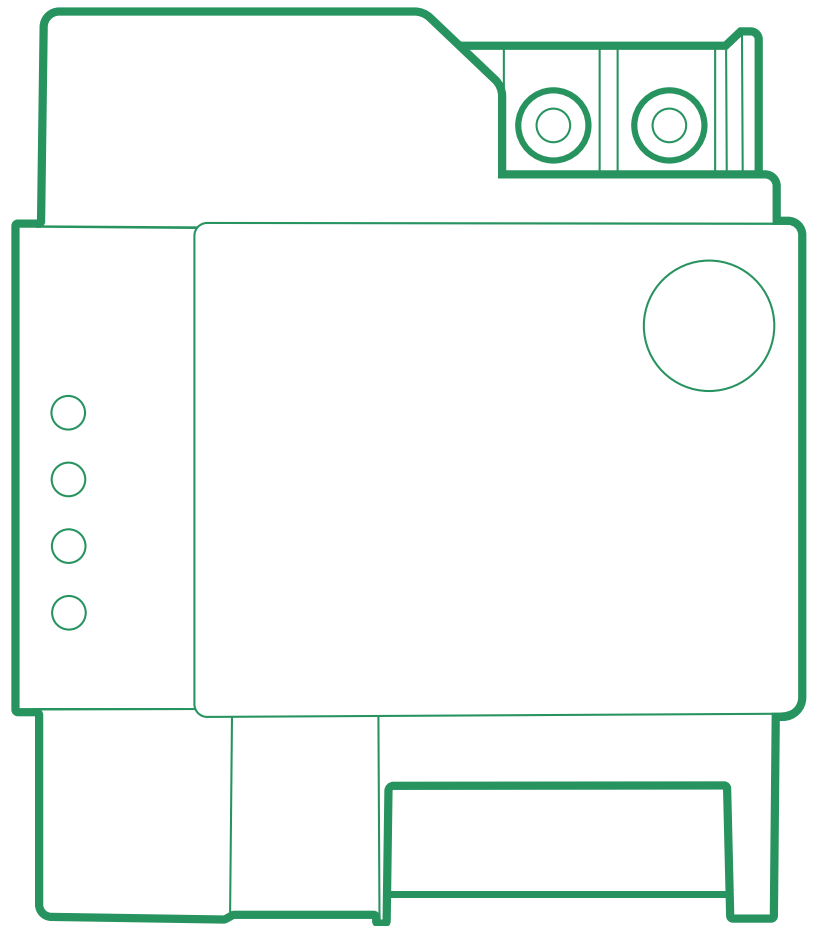
e-mobility

Industrial meters

Smart meter gateway

Domestic meters

Special meters



CASA

Smart meter gateway

Our certified smart meter gateway CASA (Communication Access Security Administrator) forms the core of the smart metering system. As a communication unit for connected metering and additional equipment, it is indispensable for the future. DIN rail installation provides flexible options for a wide range of applications.



CASA

Smart meter gateway

Our certified smart meter gateway CASA (Communication Access Security Administrator) forms the core of the smart metering system. As a communication unit for connected metering and additional equipment, it is indispensable for the future. DIN rail installation provides flexible options for a wide range of applications.

Summary:

- PTB approval (PTB-A 50.8)
- BSI certification (BSI-CC-PP-0073)
- Meets the requirements for the basic device profile according to TR 03109-1
- Updateable for extended and future application profiles and functions
- Interoperable standard interfaces for WAN, LMN and HAN
- HAN/CLS components for smart metering, smart grid, smart home and e-mobility
- Swappable value-added module, for subsequent or future extensions

Can be combined with the following products:

- EMH basic meter*
- EMH mMe4.0 with BAB (e.g. ZSM-ED)*
- RLM solution with LZQJ-XC with BAB (ZSM-XC)*
- Industrial solutions with DIZ-H*
- Interoperable with other modern metering devices and basic meters from other manufacturers
- Control box

* all mentioned solutions feature PTB approval



Special meters

Domestic meters

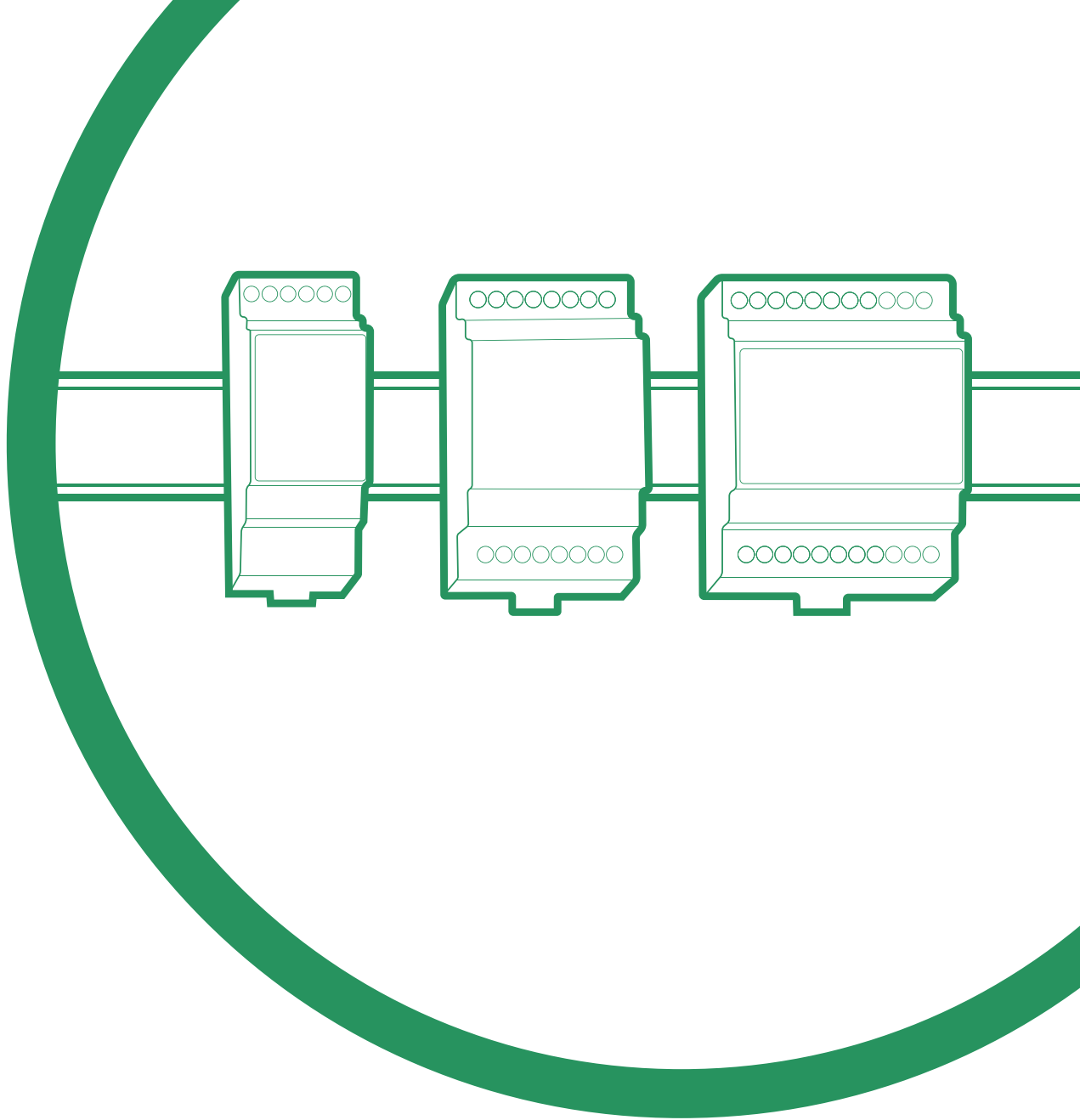
Smart meter gateway

Industrial meters

e-mobility

Communication

Software



Industrial meters

EMH metering offers special DIN rail meters for industry and commerce. This particularly compact type of meter provides you with precise data on the energy consumption of your machines or application. In addition, the consumer can be billed. With our industrial meters, you can set up this “sub-metering” as a new business area.



DIZ-H

Digital industrial meter

The H generation DIZ-H is our digital meter for smart meter gateway rollouts. The DIZ- H for industrial applications and billing purposes in the field of DIN rail devices can be connected directly to a smart meter gateway with its LMN interface. With its value history, it also meets the legal requirements for modern metering devices. It can already be installed in MBUS readouts today and protects your investment thanks to the option of switching to LMN communication. The DIZ-H thus provides a highly flexible and compact basis for the formation of an intelligent metering system. Optionally, the meter comes equipped with a meter reading process that complies with calibration regulations for the metering of own power generation and for the delimitation of third-party quantities. The DIZ-H with its compact design (6 TE) delivers the conditions for exemption from EEG apportionment according to para. 62 German EEG.

Summary:

- Transformer meter 1(6) A or direct metering 80 A
- Various voltage versions
- Active and reactive energy detection
- Usable as a modern metering device according to the German Meter Operation Act
- Suitable for connection to a smart meter gateway for operation in the smart metering system
- Secure TLS communication

Can be combined with the following products:

- Configuration software: Industrial meter tool

DIZ-G

Digital industrial meter

The G generation DIZ is our digital meter for industrial applications and billing purposes. It is the ideal DIN rail device for all metering scenarios. A solid, single-button solution, a clear operating concept, and an easy-to-read display with proven installation control provide every conceivable comfort.

Summary:

- Transformer meter 1(6) A – can be used for both 1 A and 5 A current transformers
- WV/BV direct 80 A, transformer 1//5
- Modbus, M-bus (also via RS485), LON
- Optomos outputs (2 x P/Q or P+/P-)
- Dual energy directions incl. active/reactive energy
- Short-circuit-resistant power supply unit
- Connection cross-sections:
- Current/neutral conductor terminals max 4.0 mm²
- Voltage/additional terminals max. 2.5 mm²
- Width: 6 TE including communication
- Transformer factor configurable in the meter

Can be combined with the following products:

- Configuration software: Industrial meter tool



KIZ

Compact industrial meter

With its device width of 4 TE, the KIZ is our compact solution for metering active energy for billing purposes in the industrial sector. Thanks to its optimised design, it allows space-saving installation at its metering station.

Summary:

- 2 and 4-conductor grids
- 1 or 2-tariff register
- Electrical interface: M-bus (optional)
- Pulse output
- Continuous N conductor incl. 2 connection terminals
- Direct metering up to 65A

Can be combined with the following products:

- Configuration software: Industrial meter tool

MIZ

Mini industrial meter

The devices of the MIZ series are single-phase meters. They are designed for installation on a DIN rail in the narrowest of spaces. With a width of only 1 TE (17.5 mm), the MIZ is our most space-saving meter.

Summary:

- 2-conductor grids
- Metering precision Cl. B according to EN 50470-1,-3
- Six-digit LC display
- 1 tariff register
- Two options available:
 - Gold:** 1x230 V, 0.25-5(32) A, pulse output, instantaneous values
 - Premium:** 1x230 V, 0.25-5(25) A, pulse output, instantaneous values, M-bus interface, operating button, display lighting

Can be combined with the following products:

- Configuration software: Industrial meter tool





Special meters

Domestic meters

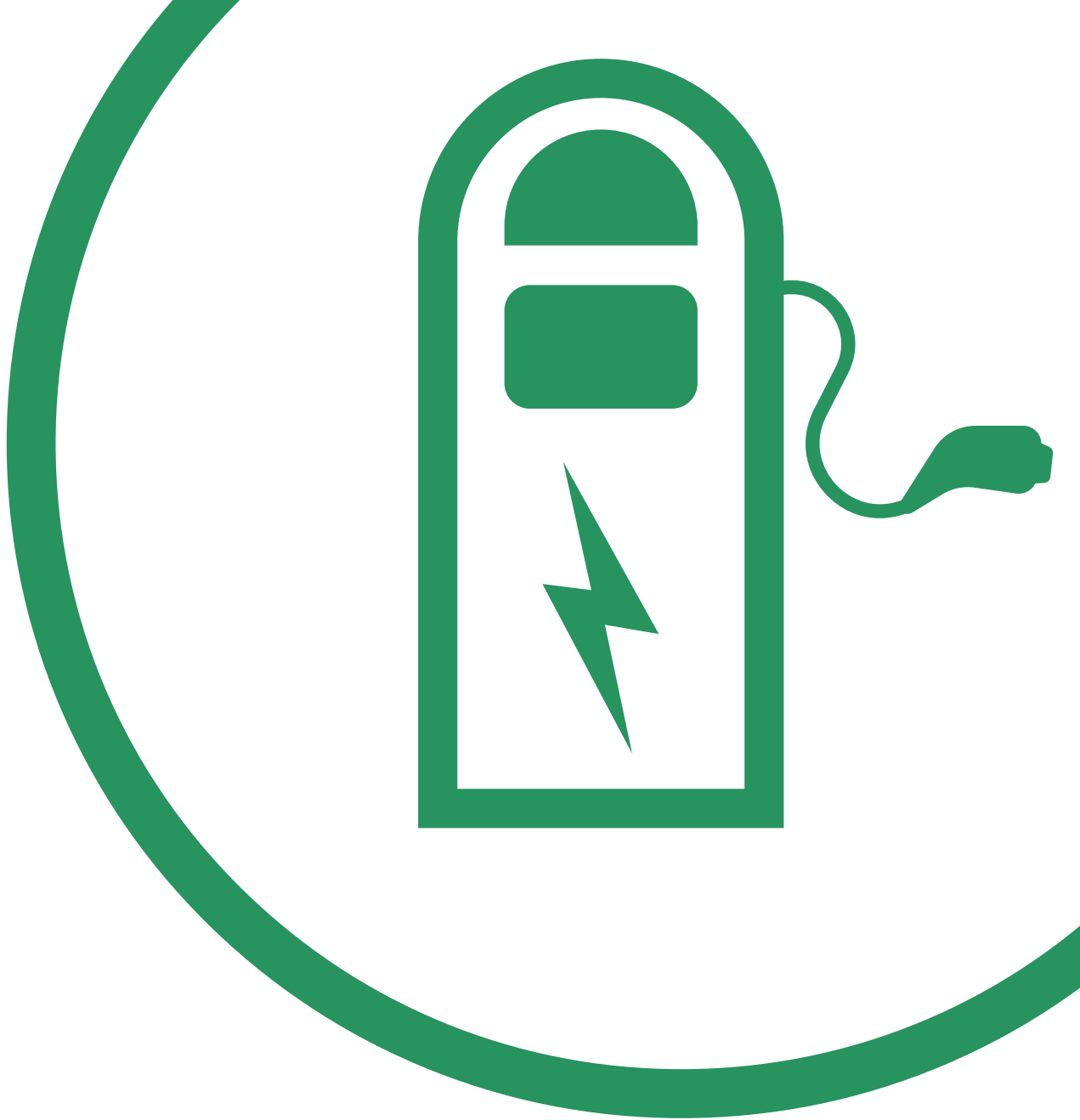
Smart meter gateway

Industrial meters

e-mobility

Communication

Software



e-mobility

For your AC charging stations, EMH metering provides you with an energy meter that complies with calibration regulations and meets all current PTB requirements for downstream billing of individual charging processes. The integration of the eHZ-K with e-mobility function into your charging point forms the basis for a legally compliant AC charging infrastructure.

To validate DC charging processes, we recommend our EM4TII+ as reference meter (metering standard).



eHZB e-moc (for e-mobility)

Electronic basic meter

The eHZ e-moc is our meter for e-mobility applications. It fulfills the requirements of the measuring capsule in charging systems in accordance with the German legislation on weights and measurements (Eichrecht). It is easy to install and exchange thanks to its plug-in system.

Summary:

- MID approval and national approval
- Usable as a measuring capsule for charging systems in accordance with the German legislation on weights and measurements
- Comprehensive signature and display functions
- Supports ad-hoc charging (kWh and charging time)
- Enables the compensation of systemic losses
- For installation on plug-in metering stations
- Available as consumption meter
- Low own consumption
- Elevated resistance to external magnetic fields
- Power supply unit with low electromagnetic radiation

Can be combined with the following products:

- Adapter plate BKE-A, BKE-I or BKE-AZ3
- Optical communication adapter OKK-BKE-F (RS232) or OKK-BKE-N (RS485)
- Compatible with S.A.F.E. Transparency software

EM4TII+

Energy meter for traction current

The EM4TII+ energy meter is designed for energy metering during travel (e.g. for consumption and regeneration of energy in locomotives, trams or on the eHighway), as well as stationary in DC and AC systems. It features approvals in the railway sector as well as a national type examination certificate.

Summary:

- Accuracy class 0.5R according to EN 50463-2 for consumption and regeneration of active, reactive and DC energy
- According to the requirements of the European Union (EU) TSI Directive
- GPS receiver connectivity to store location information

Can be combined with the following products:

- TEMA4G box optional
- Communication and parametrisation software: Combi-Master 2000



Special meters

Domestic meters

Smart meter gateway

Industrial meters

e-mobility

Communication

Software



Communication

EMH metering offers a wide range of communication technology for industrial and commercial billing as well as for household customers. We have the right communication solution for every application: from meter modems for RLM billing to highly secure smart meter gateways for smart meter rollouts.



VARIOMOD-XC

Internal meter modems

The communication modems of the Variomod XC series are designed for installation and use as internal modems for EMH meters of the LZQJ SGM and XC series. They are used to read data and are suitable for use in all common control centres.

Summary:

- Transparent readout
- IP telemetry (incl. encryption)
- Extensive push functions (FTP, IPT, UDP, SMS)
- Password protection
- Grid status monitoring and alarm messages
- Additional RS485 interface
- RS485 cabling with RJ socket or spring loaded terminal
- Cost control
- Swappable during meter operation
- Remote update/configuration option
- NTP meter time synchronisation
- Available in the following versions: Ethernet, GPRS and LTE

Can be combined with the following products:

- LZQJ-SGM, LZQJ-XC and DMTZ-XC
- Configuration software: VARIOMOD Manager

IMXCRS

Internal interface module

The Interface-XC module extends the meters of the XC and SGM series by further parallel and independent interfaces. It features an RS232 and a bus-capable RS485 interface. As with all EMH modules and modems, installation can be carried out during meter operation.

Summary:

- Interface extension for meters of the SGM and XC series
- RS232 and RS485 interface
- Swappable during meter operation

Can be combined with the following products:

- LZQJ-SGM, LZQJ-XC and DMTZ-XC



ZSM-XC

Internal communication adapter

The meter security module (ZSM for short) serves as a communication adapter and provides the option of extending the meters LZQJ-XC, DMTZ-XC and LZQJ-SGM with an RS485 data interface according to BSI TR 03116-3. This enables the use of XC meters with a smart meter gateway in smart metering systems.

Summary:

- Secure TLS communication with smart meter gateways
- Communication according to BSI TR 03116-3
- According to LMN requirements
- Swappable during meter operation
- PTB approval (BPB)

Can be combined with the following products:

- LZQJ-SGM, LZQJ-XC and DMTZ-XC

OKK RS232/USB

Optical communication adapter

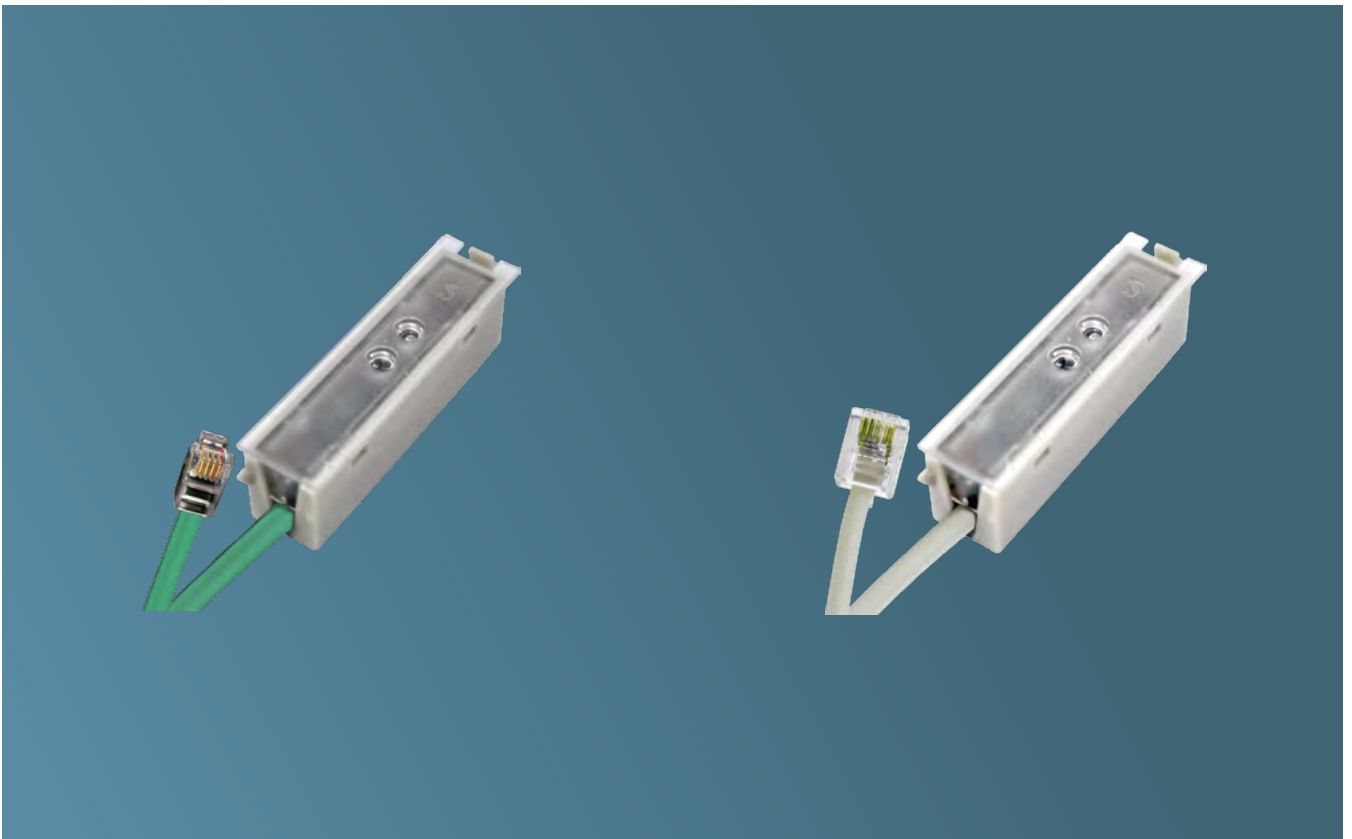
The OKK-RS232 and OKK-USB optical communication adapters are readout adapters for communication between an electricity meter with an optical interface and a readout device with either an RS232 or USB interface.

Summary:

- Readout via the D0 interface on the meter
- Magnetic holder
- Usable independent of voltage supply
- Data transmission with 9600 baud

Can be combined with the following products:

- Devices with a D0 interface
- Readout devices with RS232 or USB interface
- Software: COMBI-MASTER 2000 and COMBI-MASTER 2.0



OKK-BKE gen. F

Optical communication adapter

The optical communication adapter is our readout adapter for the modern metering devices eHZ-K and eHZM in plug-in design. With this meter, the optical interface is located on the rear of the device. The OKK is used for communication between the eHZ-K and readout devices with RS232 interface.

Summary:

- Suitable for BKE systems according to DIN VDE 0603-5
- Speed up to 9600 baud
- Cable with RJ plug available in different lengths (40 cm, 80 cm, 100 cm or 150 cm)
- The OKK-BKE-F is identified by its “green” data cable. It serves to distinguish it from the OKK-BKE-N.

Can be combined with the following products:

- eHZ-K in combination with VMMT-F
- eHZ-P in combination with VMMT-N
- eHZM in combination with VMMT-F

OKK-BKE gen. N

Optical communication adapter

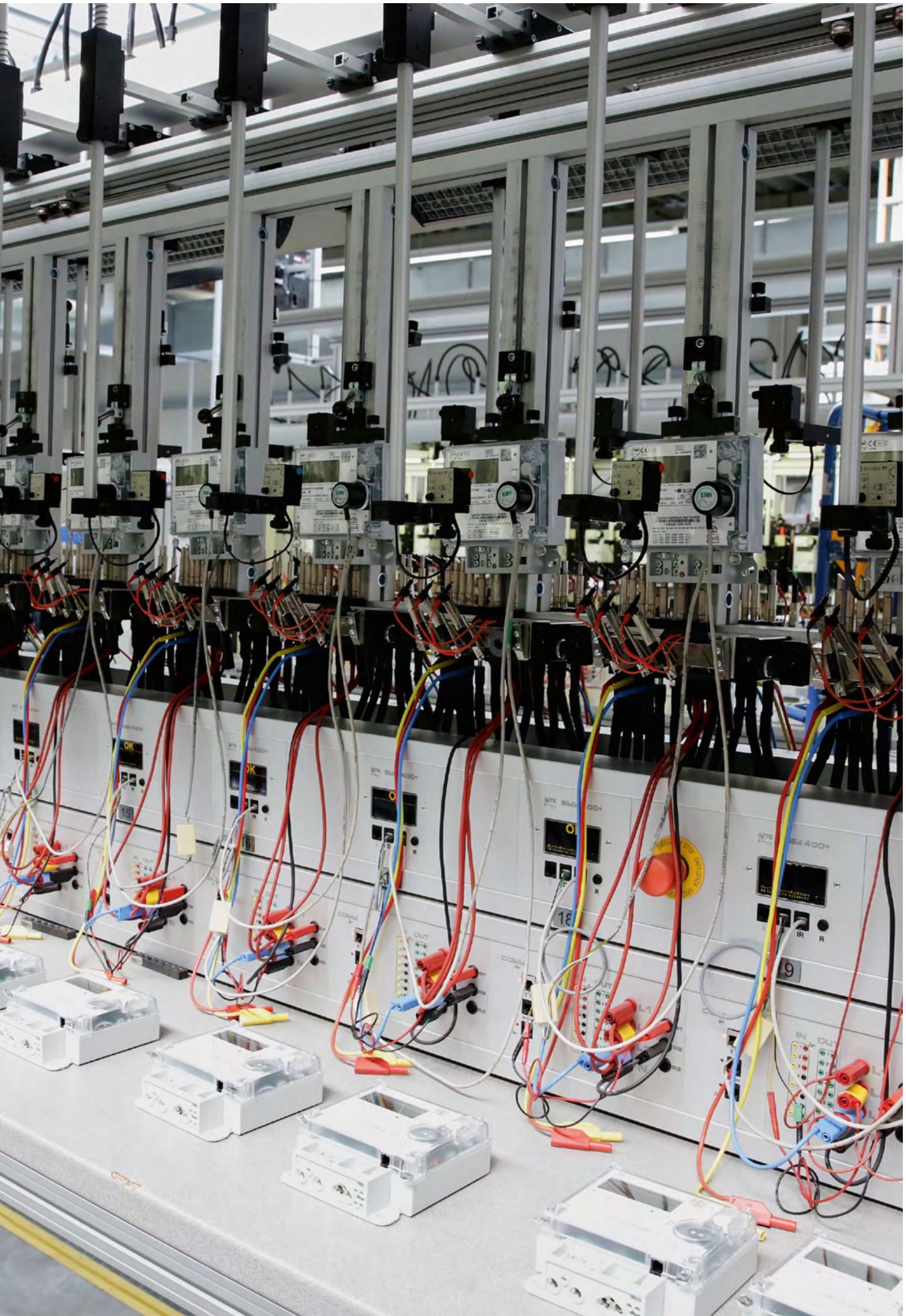
The optical communication adapter is our readout adapter for the eHZ-P basic meter in plug-in design. With this meter, the optical interface is also located on the rear of the device. It serves to connect the eHZ-P to communication devices such as smart meter gateways.

Summary:

- RS485 interface
- 921.6 kBit/s transmission rate
- Suitable for BKE systems according to DIN VDE 0603-5
- Cable with RJ plug available in different lengths (50 cm, 100 cm or 150 cm)
- The OKK-BKE-N is identified by its “grey” data cable. It serves to distinguish it from the OKK-BKE-F.

Can be combined with the following products:

- eHZ-P
- FFN basic meter in plug-in technology
- eHZB



Software

Communication

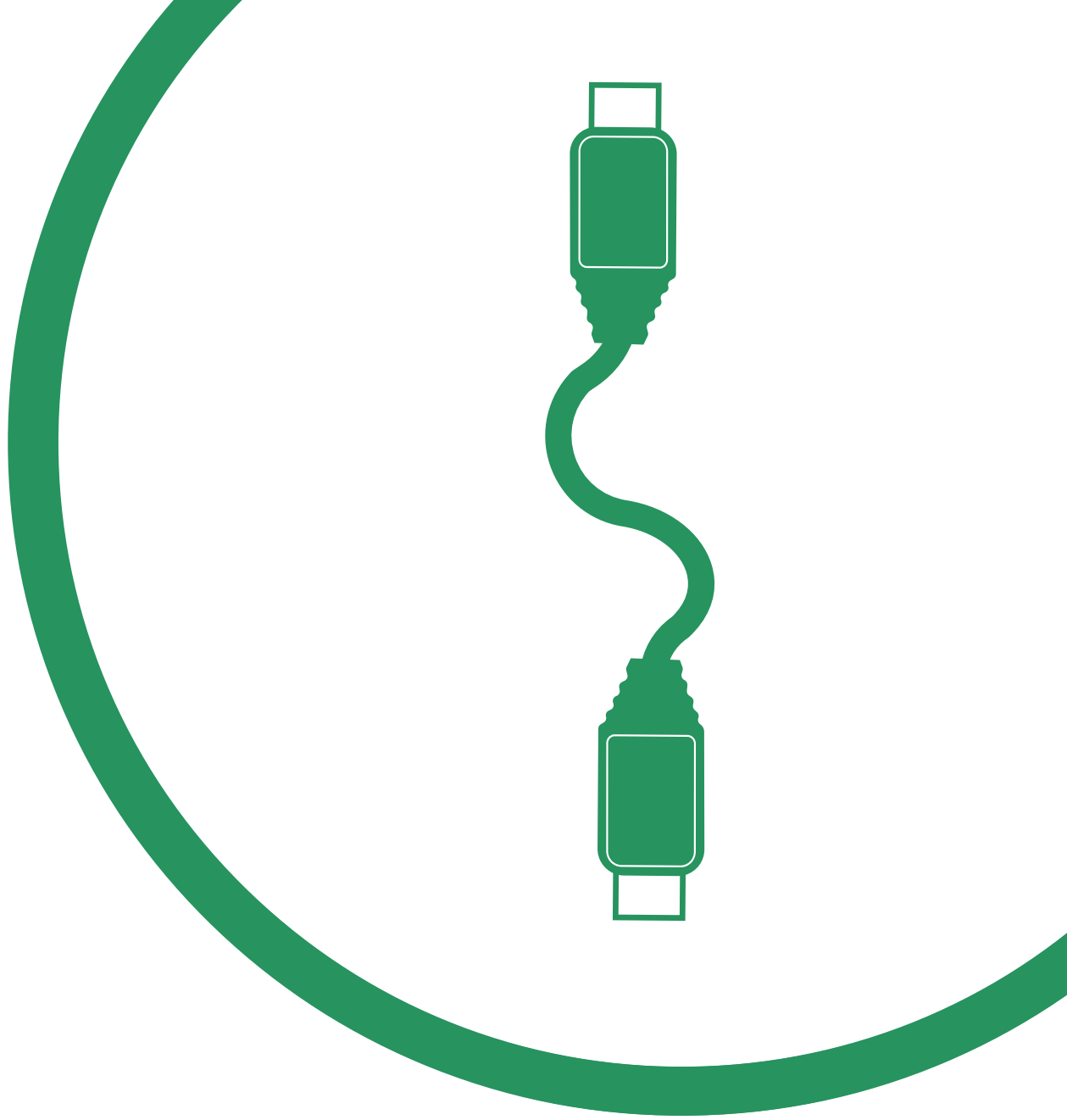
e-mobility

Industrial meters

Smart meter gateway

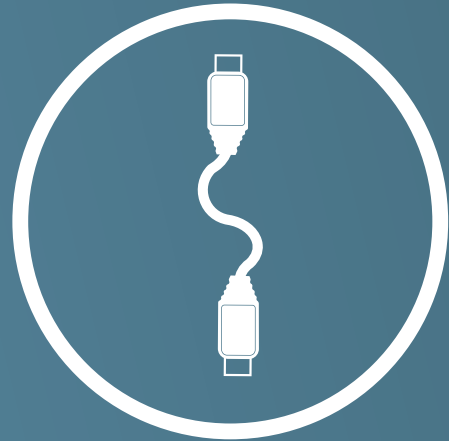
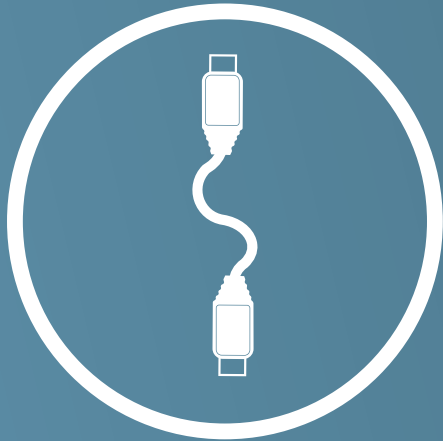
Domestic meters

Special meters



Software

With our software systems, you can significantly increase the benefits of digital electricity meters. We have designed our systems to combine as many functions as possible in one tool, making our solutions particularly efficient. In addition to storing and transmitting meter data, these solutions also allow you to configure and control EMH meters and communication modules - for optimal implementation of your business models.



COMBI-MASTER 2.0

Parametrisation and communication software

The COMBI-MASTER 2.0 tool is a configuration, data reading and firmware update program. With this tool you can read and parameterise meters and control special functions and parameters. It helps you with billing, network analysis and power quality monitoring.

Summary:

- Readout and configuration of meter data
- Graphical visualisation of measured energy and power quality data
- Remote firmware update
- Intuitive and user-friendly operation

Can be combined with the following products:

- LZQJ-SGM

EMH-COMBI-MASTER 2000

Parametrisation and communication software

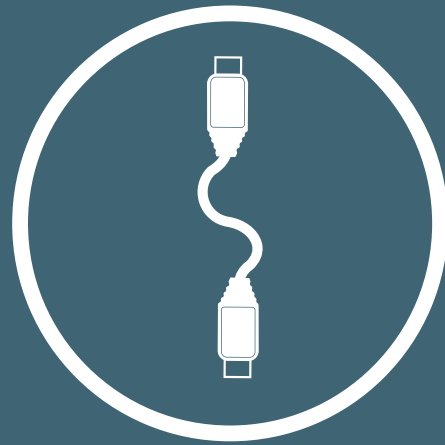
The EMH-COMBI-MASTER 2000 software is our meter communication and parametrisation program for a wide range of available EMH meters. With this software, depending on the meter product, you can read out and parameterise devices as well as control special meter functions and parameters.

Summary:

- Graphical load profile display
- Meter clock setting
- Including Combi-Tool for functions of the meters listed below
- Optional: modem function
- Optional: tariff settings for individual meter types
- Optional: sending write commands
- Integrates the functions and options of the EMH-COM software

Can be combined with the following products:

- LZQJ-XC and DMTZ-XC
- XC-RACK
- EM4TII
- eHZ-K
- ED300L
- ED300S
- ITZ



VARIOMOD Manager

Configuration tool

The VARIOMOD Manager software is our software tool for configuring external VARIOMOD meter modem as well as internal VARIOMOD-XC meter modems.

Summary:

- Local or remote configuration connection
- Configuration of modem and meter connection
- Multi-version handling

Can be combined with the following products:

- Meter modem VARIOMOD
- Meter modem VARIOMOD-XC series

Software tool for digital industrial meters

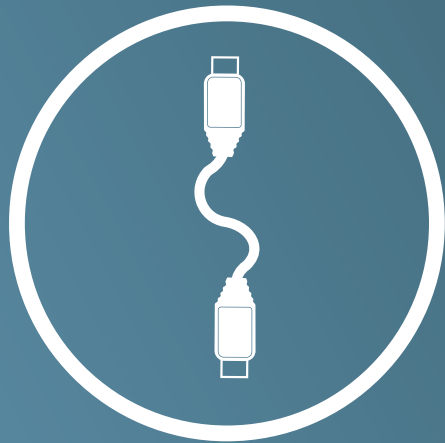
The industrial meter tool (also called DIZ tool) is our communication and configuration program for the digital industrial meters DIZ-G and DIZ-H. It can be used to read out and save meter data and to change device settings.

Summary:

- Meter data readout
- Communication between meter and PC with M-bus level converter
- Configuration of DIZ devices

Can be combined with the following products:

- EMH industrial meters
- M-bus level converters



Software tool for basic meters

The basic meter tool (BZ tool for short) is our configuration program for the EMH basic meters eHZ-P, eBZD-F, eBZD-G, eHZB and eBZD-H. It can be used to read out and save meter data and to change device settings.

Summary:

- Configuration options
- Meter data readout
- Tariff adjustment in the device
- Reading out/viewing logbooks for the purpose of tracing events on/in the device
- Storage of seconds index and meter reading
- OKK connection option

Can be combined with the following products:

- eHZ-P
- eBZD-F
- eBZD-G
- Meter security module ZSM-XC
- eHZB
- eBZD-H

Software tool for CASA

With TRuDI (transparency and display software), the **Bundesdisplay** initiative provides a manufacturer-independent, standardised visualisation solution which fulfils the requirements of the German Meter Operation Act (in particular para. 35, para. 62) and PTB-A50.8 and which can be used within the specification framework of the German Federal Office for Information Security. TRuDI provides a display function through which measured values available in the SMGW are displayed to the end user. Furthermore, a so-called transparency function is available. Within the scope of this functional feature, the software enables the end consumer to locally reconstruct tariff calculations carried out on the basis of measured values of the SMGW in the supplier's system and thus to verify bills.

Summary:

- You can use the display function to display current register readings, meter readings and messages from the smart meter gateway at any time.
- If tariffing takes place directly in the smart meter gateway, the displayed register readings can be used for billing verification.
- If tariffing is not carried out in the smart meter gateway itself, but on the basis of a meter reading at your supplier, you will receive a file with tariffing information from the supplier. Using this file, TRuDI can load the data required for billing verification from the smart meter gateway and calculate as well as display the tariff registers.

Can be combined with the following products:

- CASA



Special meters

Domestic meters

Smart meter gateway

Industrial meters

e-mobility

Communication

Software

What we expect from ourselves and our suppliers

Even in a highly competitive market, there are rules. This refers to principles and attitudes that are not only economic in nature. In our age of global dependencies, issues such as sustainability, participation, equality, environmental protection, safety and health are also relevant. At EMH, we adhere to the principles of responsible and mindful action. And what we demand of ourselves, we can also expect from the partners who work with us.

Corruption, anti-trust law and other ethical principles

Corruption, blackmail, breaches of trust and embezzlement in any form are strictly prohibited. The acceptance of bribes and other such payments is also prohibited as is the acceptance of gifts for the recipient's own benefit. This ban also applies to sub-suppliers of the supplier. Suppliers are not permitted to offer travel, cash or similar inducements to EMH employees. Compliance with the principles of non-discrimination in supplier selection and in dealings with suppliers is mandatory. Fair competition, fair contract arrangements with business partners and the recognition of anti-trust laws are mandatory.

Sources: BME III 1a; BME III 1b; UN P10

Minerals of conflict

Suppliers must take reasonable steps to ensure that the tantalum, tin, tungsten and gold used in the products they manufacture do not finance or support, directly or indirectly, armed groups guilty of serious human rights violations in the Democratic Republic of Congo or neighbouring countries. The neighbouring countries in question are Angola, Burundi, Central African Republic, Republic of the Congo, Rwanda, Sudan, Tanzania, Uganda and Zambia. Suppliers are expected to exercise due diligence on the source and chain of custody of these minerals and make their due diligence measures available to EMH upon request.

Source: U.S. Public Law 111-203 (21 July 2010)
REGULATION (EU) 2017/821 OF THE EUROPEAN PARLIAMENT AND OF THE COUNCIL of 17 May 2017

Labour standards and labour law

Ban on child labour

All employed persons must be at least 15 years old. The basis for this minimum age for employment is formed by several conventions of the International Labor Organization (ILO). These conventions govern the internationally applicable age limits. If a higher minimum age of employment applies in the country in which the supplier concerned operates, this age limit must be observed. In countries that are classified as „developing countries“, the minimum age may be reduced to 14 years. Furthermore, the supplier is required not to assign hazardous work to employees under 18 years of age.

Sources: ILO No. 138,182; UN P5

Ban on forced labour and mistreatment

Forced labour – in all forms – is prohibited. Suppliers are expected to treat their employees fairly, without sexual harassment, sexual abuse, physical punishment or torture, mental or physical coercion or verbal abuse, and without the threat of such treatment.

Sources: ILO No. 29, 105; UN P4; BME III 1c

Ban on discrimination

It is inadmissible for workers to be disadvantaged, favoured or marginalised in recruitment, training and / or promotion on the grounds of race, colour, sex, age, religion, political opinion, national or social background, disability / health condition, etc. The supplier must ensure that the employees are not discriminated in relation to the above points.

Sources: ILO No. 111, UN P6, BME III 2b

Working hours, minimum wage and other social benefits

The minimum wage and social benefits applicable to the country in question must be paid to the employees. The supplier is expected to pay its employees regularly and punctually. No illegal or unauthorised deductions may be made nor deductions from wages as a punishment. In cases where statutory minimum wages or minimum industrial standards do not cover the basic cost of living, the supplier is required to pay its employees reasonable remuneration that covers these basic needs. Likewise, the statutory working hours and maximum periods including statutory breaks must be observed. Each employee is entitled to at least one day off after six consecutive working days. The supplier is expected to provide its employees with appropriate training and development opportunities.

Sources: ILO 1, 14, 26, 131

Guarantee of freedom of association and protection of the right of association

In accordance with legal requirements, employees are entitled to associate freely, to join labour unions, to form works councils, to elect workers' representatives, to engage in collective bargaining etc. Employees involved in such activities must not be disadvantaged by the supplier.

Sources: ILO No. 87,98; BME III 2d

Health protection and occupational safety

Occupational safety and health at the workplace must be ensured in compliance with statutory regulations. This means that protection against any chemical, physical and mechanical hazards in the workplace and any equipment provided is required. This also includes appropriate controls, safe working practices, preventive maintenance and protection, and precautionary measures (e.g. instructions, guidelines, training, contingency plans, including notification procedures) against accidents and occupational diseases. If such hazards cannot be adequately controlled and prevented by the above measures, the supplier is obliged to provide its employees with suitable personal protective equipment. It must also be ensured that all employees are informed and trained on this topic.

Source: BME III 2c

Environmental protection

Compliance with the environmental laws and regulations required in each country is mandatory. This means that all required certificates, approvals and related requirements must be in place and implemented. It is also expected that any environmental impacts will be minimised and environmental protection measures continuously improved. The supplier is obliged to establish systems that ensure safety during the handling, transport, storage, etc. of waste, waste gases and waste water. Impacts that adversely affect human health and/or the environment and the climate must be managed, measured and controlled in an appropriate manner and minimised or eliminated at source by a variety of procedures. Natural resources (e.g. water, raw materials) must be conserved. Suppliers are required to promote the development of climate-friendly products, processes and procedures in their own companies.

Sources: BME III 2e, UN P7-9

Quality and product safety

Compliance with the generally accepted or contractually agreed quality requirements for the products is mandatory. The supplier is expected to employ programmes to manage and maintain work processes in accordance with safety standards and, where appropriate, implement risk analyses and preventive measures. The supplier is obliged to present product safety sheets with all safety-relevant information to EMH upon request.

Responsibilities

All laws, regulations, contractual agreements and agreed standards must be accepted and adhered to. Non-compliance shall have consequences. The supplier shall initiate and/or implement processes for identifying, determining and monitoring risks that are referred to in this code of conduct, laws and regulations, contractual agreements and standards. Thus it is required that communication channels be established so employees can report unlawful behaviour or actions. Confidential treatment of such information and a follow-up investigation based thereon are mandatory. The supplier is expected to continuously improve its own sustainability performance (based on this code of conduct) through appropriate measures.

Communication, information and documentation

The supplier is expected to operate an open and constructive communication policy with its employees and business partners. The supplier is obliged to make its employees aware of existing legal provisions, agreements and standards, thereby avoiding infringements. It is also expected that the principles above will be communicated to the employees. Suitable training measures and information media must be used to ensure this awareness and communication. The supplier is requested to communicate the principles in this code of conduct to other companies further down the supply chain. The protection of confidential information and data is mandatory. This also applies to the intellectual property of the supplier's own employees and business partners. The disclosure of such information to third parties is strictly prohibited.

Sources: BME III 2f; IV

Review and sanctions

The supplier authorises EMH to verify compliance with these principles or have compliance audited by a third party approved by both parties. EMH reserves the right to take appropriate action in case of violations of the code of conduct. In the event of a violation, a request will initially be issued to remedy and/or resolve the grievances with an appropriate deadline being set depending on the violation. The process must be documented by the supplier and presented to EMH.

What we expect from ourselves and our suppliers

If the grievance is not remedied and/or resolved by the deadline set or if a violation of the Supplier Code of Conduct appears repeatedly, the supplier will be blocked and/or the cooperation will be terminated.

Sources

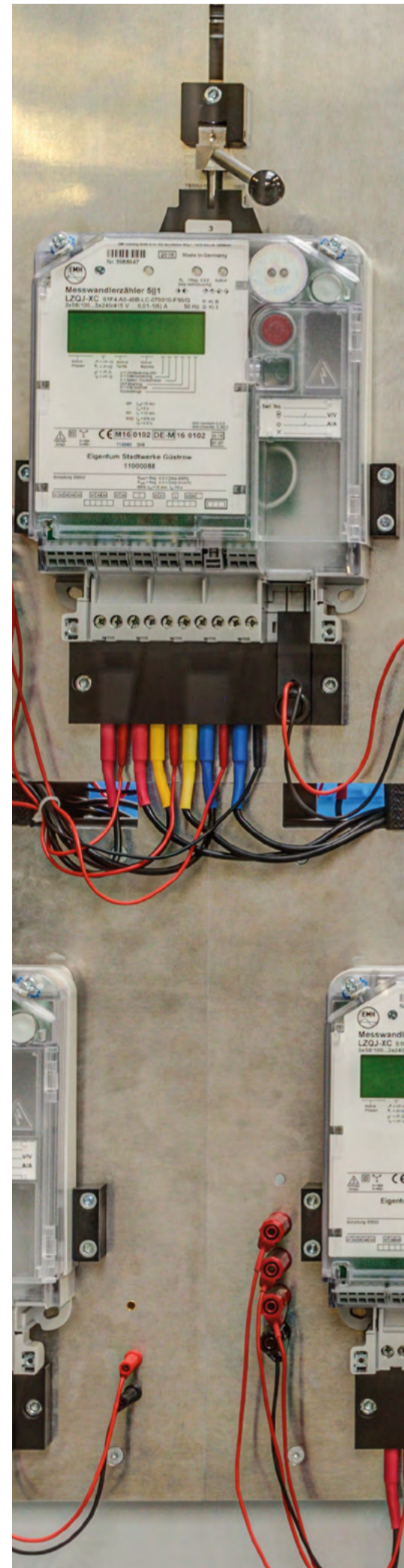
Bundesverband Materialwirtschaft, Einkauf und Logistik e.V. (BME): http://www.bme.de/fileadmin/pdf/Pressemeldungen/2008_11_10_BME_Verhaltensrichtlinie-CoC.pdf

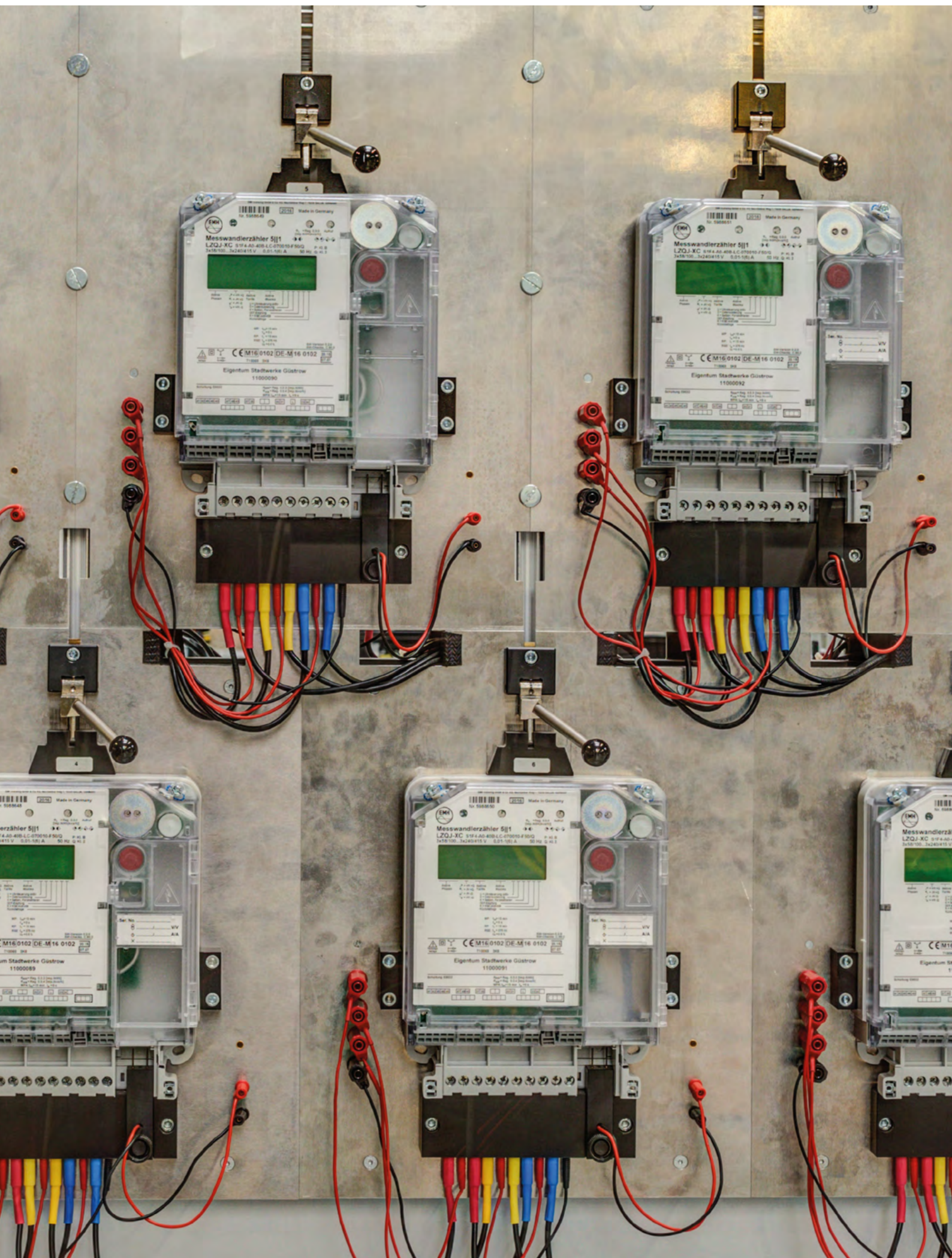
United Nations Global Compact:
www.unglobalcompact.org/AboutTheGC/TheTenPrinciples/index.html

International Labour Standards (ILO):
www.ilo.org/public/german/region/eurpro/bonn/kernarbeitsnormen/index.htm

OECD Guidelines for Multinational Enterprises:
www.oecd.org/document/3/0,3343,de_34968570_39907066_41979843_1_1_1_1,00.html

U.S. Public Law 111-203 (21 July 2010):
<http://www.gpo.gov/fdsys/pkg/PLAW-111publ203/content-detail.html>









Get to know us



Birte Duggen
Head of department Human Resources & Legal



Detlef Einacker
Head of department International Sales



Björn Gogolla
*Director Sales
Member of the Management Board*



Dr. Peter Heuell
Managing Director



Christopher Kämpf
*Head of department Production
Head of Business Process Management*



Jochen Kramer
Head of department Hardware Development



Norbert Malek
Managing Director



Marcel von Malottke
Head of department IMS (Integrated Management System)



Wolfram Schmelzer
Head of department Software Development



Alexander Theisen
Head of department Purchase



Christian Verrieth
*Director Administration/Controlling/
Finance Member of the Management Board*



Matthias Wagner
Head of department IT

Contact

In order to offer you the best possible service, we would like to explain our structure and provide you with information regarding service processing on these pages. Depending on the type of service, different departments are responsible for your request.

Sales

All sales requests and other services such as reconfiguration, conversion and calibration

Phone: +49 38851 326-1910

E-mail: sales@emh-metering.com

Technical support

Questions about functionality, operation and any abnormalities during commissioning

Phone: +49 38851 326-1930

E-mail: support@emh-metering.com

Complaint management

Returns of defective equipment for repair/inspection; problems with delivery, complaints, notes and comments on the acceptance test

Phone: +49 38851 326-1980

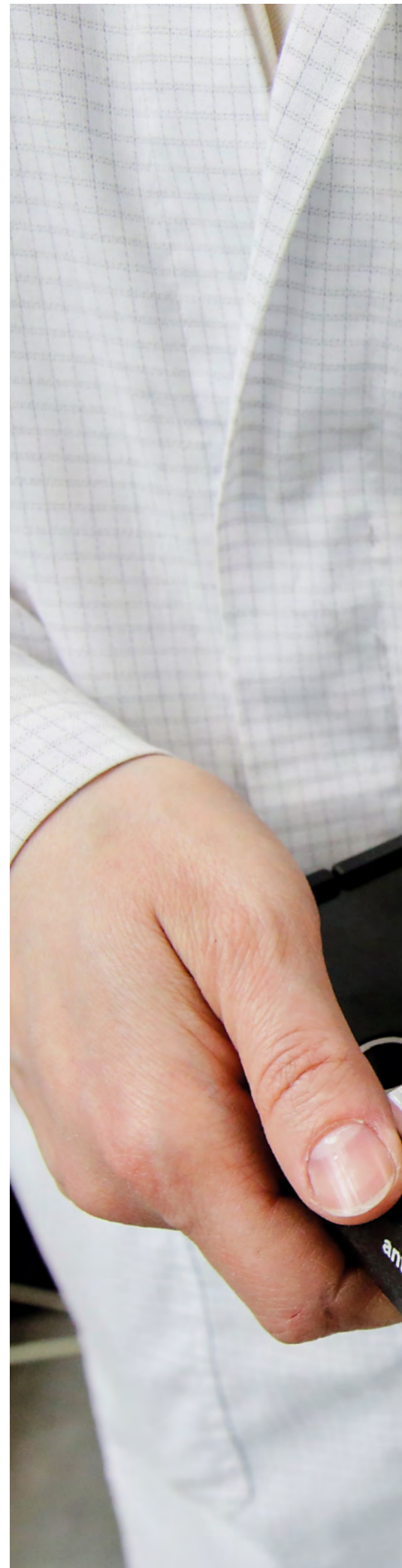
E-mail: cm@emh-metering.com

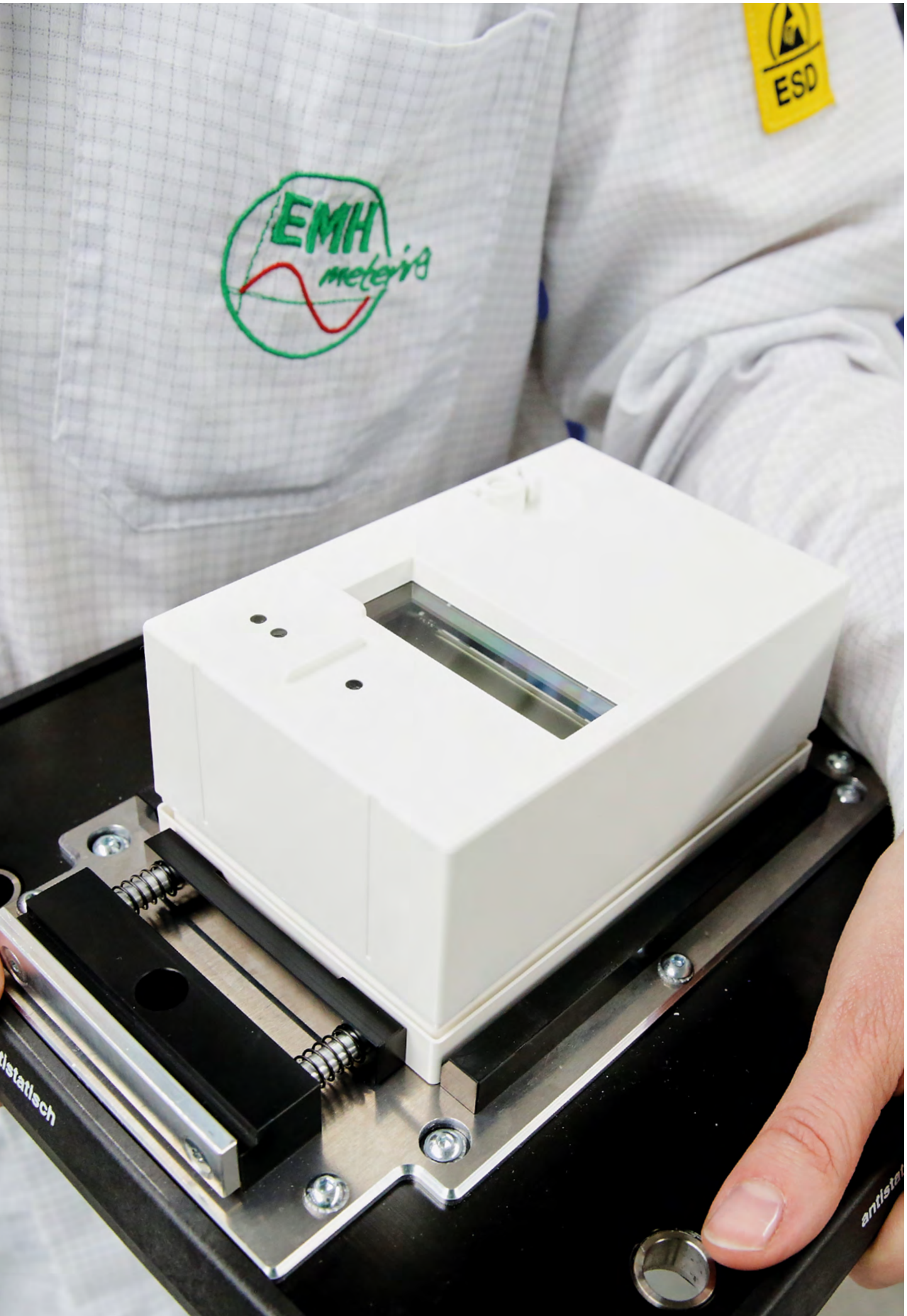
Marketing

Inquiries regarding marketing, press and public relations as well as events

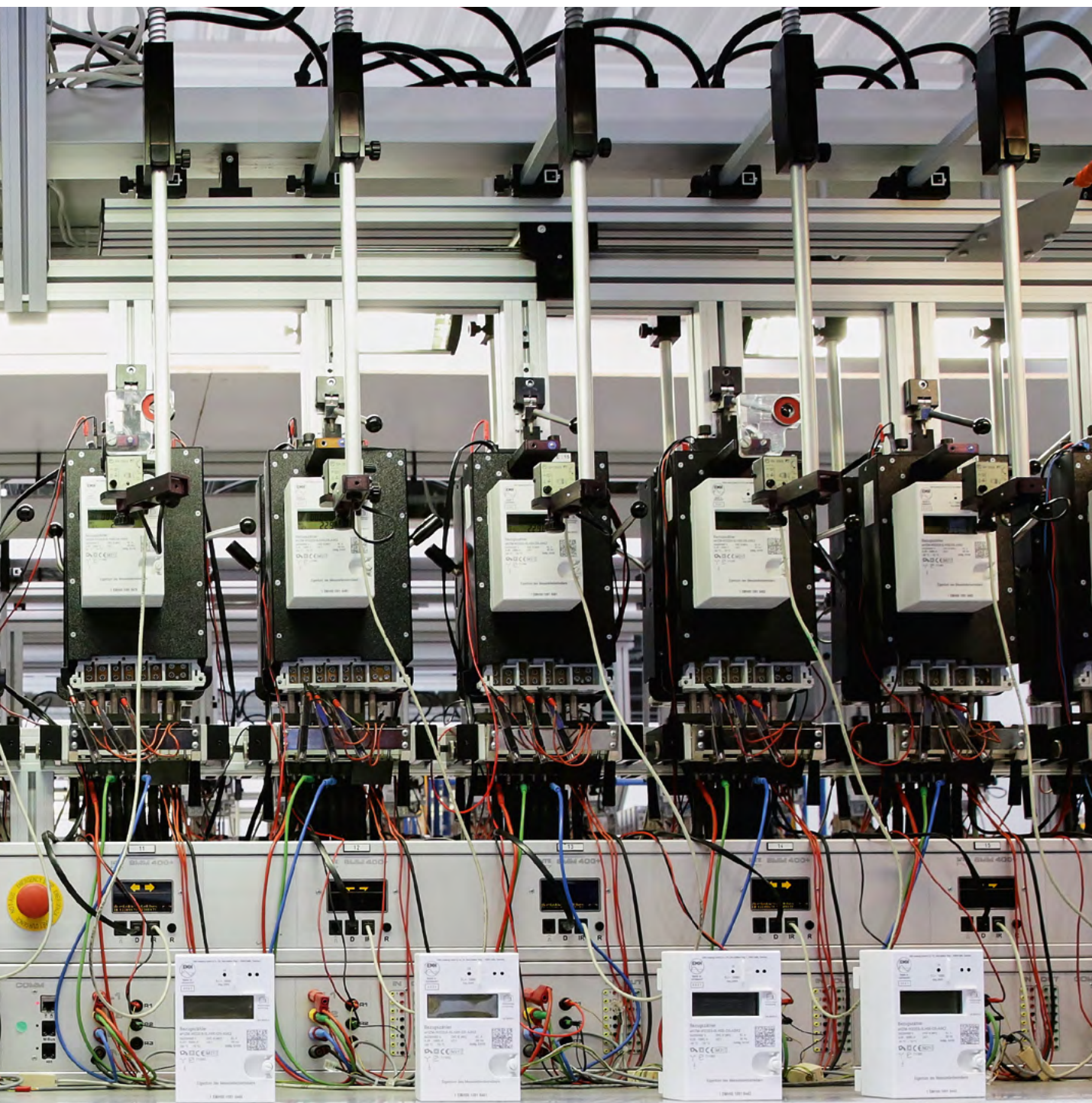
Phone: +49 38851 326-1182

E-mail: mktg@emh-metering.com









Imprint

EMH metering GmbH & Co. KG

Neu-Galliner Weg 1
19258 Gallin/GERMANY

Phone: +49 38851 326-0

Fax: +49 38851 326-1129

E-mail: info@emh-metering.com

www.emh-metering.de

As of: September 2023

